

# Datasheet SADRIN

## Mini IR window barrier.

Miniaturized infrared barrier, particularly studied and recommended for the protection of doors and windows but, thanks to the high capacity of its kind, it can be used for the protection of very large surfaces, using the special articulated brackets if required, provided that they are not directly exposed to bad weather (in case use IP65 version).

CHARACTERISTIC	
OUTDOOR RANGE	0.4-15 m (5m white cover)
INDOOR RANGE	0.4-30 m (10m white cover)
DOUBLE BEAMS OPTICS	AND with 35mm lens
PHOTODEVICES	Pulsed type beams with a wavelength of 950 nm
SYNCHRONIZATION	Wired
CALIBRATION	Parallel
BEAMS CONFIGURATION	2-4-6-8-10 Beams selectable
DETECTION SYSTEM	OR- AND RANDOM on board
INTERVENTION TIME REGULATION	150-250 ms selectable by dip
CIRCUIT POWER SUPPLY	13.8 Vcc
CIRCUIT CONSUME	From 60 to 150 mA (RX+TX)
HEATERS (OPTIONAL)	Temperature < -10°C. Thermostate Kit. Power supply 12Vdc @ 0,5 A for beam (RX+TX)
WORKING TEMPERATURE	-10°C / + 70°C
OUTPUT: ALARM	Free Contacts Relay NC (on RX side)
OUTPUT: TAMPER	Free Contacts Relay NC
IP PROTECTION	IP54 / 65 (on demand)
DIMENSIONS PROFILE LXP	25mm x 25.5mm
DIMENSIONS PROFILE H (INCLUDED CAP)	from 500 to 4000mm

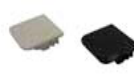


## ACCESSORIES

Standard closing caps included



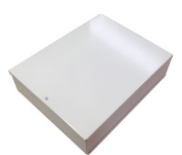
Closing Flat caps



Junction bracket SADRIN SD2



Power supply LAR22 S



Thermostated kit and heaters SADRIN KIT TER

