

Datasheet SADRIN SMA

Mini barrier IR for windows

Miniaturized infrared barrier, particularly studied and recommended for the protection of doors and windows but, thanks to the high capacity of its kind, it can be used for the protection of very large surfaces, using the special articulated brackets if required, provided that they are not directly exposed to bad weather (in case use IP65 version). SMA technology to obtain maximum alignment and optical synchronism to speed up installation times.

CHARACTERISTIC	
OUTDOOR RANGE	0.4-10 m (3m white cover)
INDOOR RANGE	0.4-20 m (5m white cover)
DOUBLE BEAMS OPTICS	AND with 35mm lens
PHOTODEVICES	Pulsed type beams with a wavelength of 950 nm
SYNCHRONIZATION	Optical
ALIGNMENT SYSTEM	SMA (optical and acoustic)
CALIBRATION	Parallel
BEAMS CONFIGURATION	2-4-6-8 Beams
DETECTION SYSTEM	OR- AND RANDOM on board
INTERVENTION TIME REGULATION	150-250 ms selectable by dip
CIRCUIT POWER SUPPLY	12V
CIRCUIT CONSUME	1.35 mA
HEATER (OPTIONAL)	For temperature < -10°C. Thermostate Kit. Power supply 12V @ 0,5 for beam (TX+RX)
WORKING TEMPERATURE	-10°C / + 70°C
OUTPUT: ALARM	Free Contacts Relay NC (on RX side)
OUTPUT: TAMPER	Free Contacts Relay NC
IP PROTECTION	IP54 / 65 (on demand)
DIMENSIONS: PROFILE LXP	25mm x 25.5mm
DIMENSIONS: PROFILE H CAP INCLUDED	From 600 to 4000mm



ACCESSORIES

Standard closing caps included



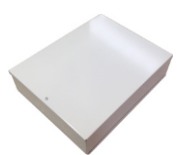
Closing Flat caps



Junction bracket SADRIN SD2 (for 12V supply)



Power Supply LAR22 S



Thermostate Heaters SADRIN KIT TER

