

Datasheet

SANDOR DUAL-QUAD-ESA SMA

High beam IR barrier with a long range

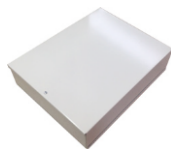
Barrier created for long perimeters, with anti-corrosion anodized aluminum structure and polycarbonate screen with small dimensions and pleasant design. The typical application is on walls for facades. Through the crossing function it is possible to create an insurmountable network composed of up to 36 beams. Thanks to the optical synchronism and the SMA technology for alignment, the installation speed is incredibly low.

CHARACTERISTICS	
OUTDOOR RANGE	1- 100 m
INDOOR RANGE	1- 200 m
DOUBLE BEAMS OPTICS	AND with 35mm lens
PHOTODEVICES	Pulsed type beams with a wavelength of 950 nm
SYNCHRONIZATION	Optical
ALIGNMENT SYSTEM	SMA Technology
CALIBRATION	Parallel or Crossed
BEAMS CONFIGURATION	DUAL: 2 Beams QUAD: 4 Beams ESA: 6 Beams
OPTICS ANGLE REGULATION	180° horizontal 20° vertical
DETECTION SYSTEM	OR- AND RANDOM on board or remote control
INTERVENTION TIME REGULATION	50-500ms via trimmer
CIRCUIT POWER SUPPLY	12V - 30Vdc
CIRCUIT CONSUME	From 135 mA to 150mA depending on the number of beams
HEATERS POWER SUPPLY	12V – 24Vac-cc
HEATER CONSUME (for column)	15W: DUAL (thermostat on demand) 25W: QUAD 35W: ESA
WORKING TEMPERATURE	-25°C / + 70°C
OUTPUT: ALARM	Free contacts Relay NC
OUTPUT: TAMPER	Free contacts Relay NC
OUTPUT: FOG DISQUALIFICATION	Open Collector NA
OUTPUT: ANTIMASKING	Open Collector NA (only on QUAD-ESA)
IP PROTECTION	IP54 / 65 (on demand)
DIMENSIONS LxPxH	60 mm x 60 mm from 500 to 4000 mm



ACCESSORIES

Power Supply
LAR22 S



Wall fixing brackets
SAN-SD



Pole or wall fixing brackets
SAN-PL



Galvanized pole 1-2m
TB1-TB2 (49mm D)



Pit **POB30**



Power supply for Pit
LAR18



Backup battery for Pit
LAR B4



Thermostat Kit (for Sandor DUAL)
SANDOR TS

