

# Datasheet

## ALES QUAD 160/250

### Long Range ultra-compact barrier

Ales Quad is a dual-beam active infrared barrier with 4 lenses with very small dimensions. Pre-wired and ready for installation, it is composed of a transmitting and a receiving unit. It finds its place in every corner and can be installed on poles or on walls. Resistant, compact and easy to install, it is the only barrier of its kind with a range of 250 meters.



CHARACTERISTIC	ALES QUAD 160	ALES QUAD 250
OUTDOOR RANGE	1-160 m	1-250 m
INDOOR RANGE	1- 350 m	1-500 m
DOUBLE BEAMS OPTICS	AND with 35mm lens	
PHOTODEVICES	Pulsed type beams with a wavelength of 950 nm	
SYNCHRONIZATION	Wired / Optical with 4 channels	
ALIGNMENT SYSTEM IR	SMA Technology	
OPTICS ANGLE REGULATION	180° horizontal 20° vertical	
BEAMS CALIBRATION	Crossed	
BEAMS CONFIGURATION	2 TX + 2 RX	
SYSTEM DETECTION	AND su 4 lenti	
INTERVENTION TIME REGULATION	50-500ms via trimmer	
POWER SUPPLY	12 – 30 Vcc	
CIRCUIT CONSUME	100 mA (RX+TX)	
HEATERS	On Demand Ales Quad TS	Included
HEATERS POWER SUPPLY	12V – 24Vac-cc	
HEATERS CONSUME	1 A (RX+TX)	
WORKING TEMPERATURE	-25°C / + 70°C	
OUTPUT: ALARM	Free Contacts Relay NC (on RX side)	
OUTPUT: TAMPER	Free Contacts Relay NC	
OUTPUT: FOG DISQUALIFICATION	Open Collector NA	
OUTPUT: ANTIMASK	Open Collector NA	
IP PROTECTION	IP65	
DIMENSIONS LxPxH	78 x 86 x 405 mm	

### ACCESSORIES

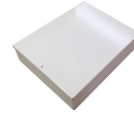
Support brackets kit included



Fixing plate included



Power supply **LAR22 S**



Galvanized pole 1-2m **TB1-TB2 (49mm D)**



Pit **POB30**



Pit power supply **LAR18**



Pit battery **LAR B4**



Thermostat **Ales Quad TS**  
(for AQ 160)

